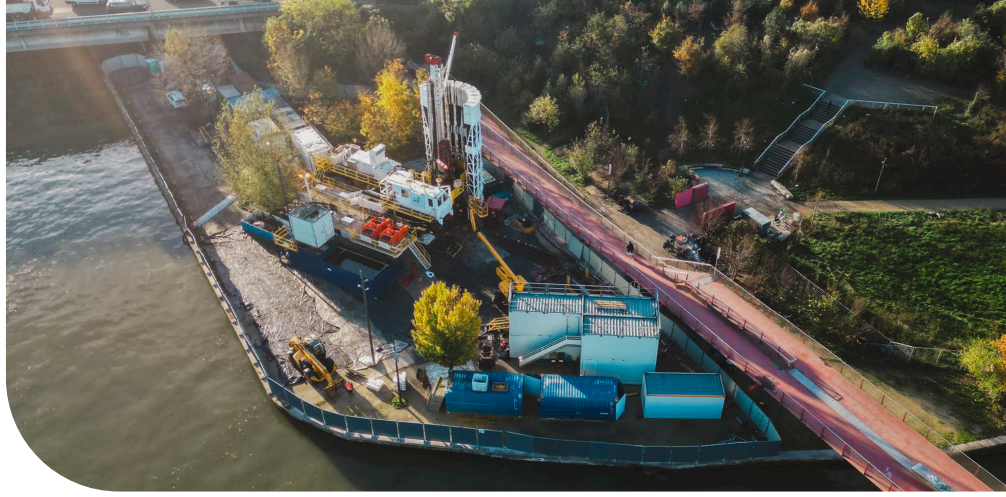


HH 102

RIG INFORMATION



Arverne | Drilling & Well Construction HH 102 A&B are modern, highly mobile, trailer mounted, Hydraulic Hoist drilling rigs. The rigs offer a reduced footprint and visual impact, in addition to low noise level and improved safety through innovative pipe handling. The HH 102 rigs have drilled numerous wells including horizontal wells.

MAST

TYPE	DRILLMEC Hydraulic
HEIGHT	max. 26,8 m from ground
MAX. HOOK LOAD	100 metric tonnes
MAX. PULL DOWN	20 metric tonnes

SUBSTRUCTURE

TYPE	TRAILER MOUNTED SELF RAISING
CAPACITY	100 metric tonnes
CASING LOAD	100 metric tonnes
HEIGHT	5,5 m

RIG POWER SYSTEM

GENERATOR	1 x 250 kVa
EMERGENCY GEN.	1 x 250 kVa
HPU	Drillmec 575 HP
PCR UNIT	400v V / 220 V / 50 Hz 2
ENGINE	caterpillar C15-540 HP

TOP DRIVE SYSTEM

TYPE DRILLMEC	HT 120 D
CAPACITY	100 metric tonnes
MAX. TORQUE	26,035 ft-lbs / 3,530 daNm
MAX. SPEED	154 rpm

BLOW OUT PREVENTION EQUIPMENT

ANNULAR BOP	11" or 13 5/8" 3000 psi
RAM BOP	11" or 13 5/8 " 3000 psi double
MANIFOLD	2"5000 psi

MUD PUMPS

TYPE (TRIPLEX)	2 x DRILLMEC 7TS600
MAX INPUT POWER	2 x 600 HP
MAX FLOW RATE	2 x 1986 l/min

MUD SYSTEM

ACTIVE TANKS	38 m ³
RESERVE TANKS	64 m ³
WATER TANKS	20 m ³

- Agitators, Mixing skid with hoopers, Mud gas separator & vacuum degasser

SOLID CONTROL SYSTEM

TYPE SHAKERS	2X Swaco shale shaker
---------------------	-----------------------

ADDITIONAL EQUIPMENT

- 2000 m 4" DP (alt. 2000 m 3 ½" DP)
- Casing make-up device, power long, auto-slips
- Automatic Driller with WOB or ROP controller
- Offices, crew cabins, workshops etc.
- Compressor unit, diesel fuel tank
- Surface eqpt (fire fighting, HP cleaning, etc.)
- Forklifts