




arverne
GROUP

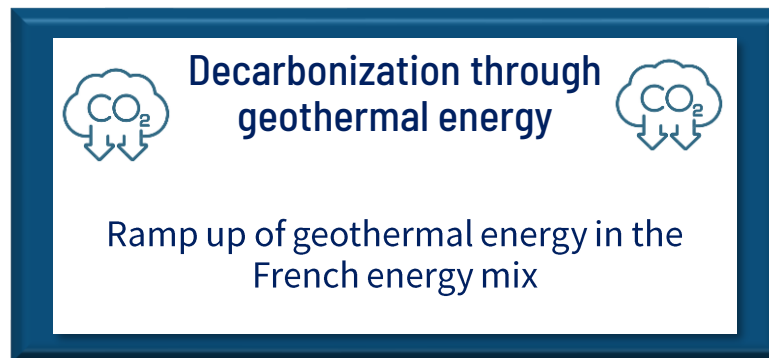


« Through its unique know-how, Arverne Group unleashes the potential of geo-resources and sustainably values them for a pragmatic energy transition dedicated to the prosperity of the local community. »

arverne
— — — — —
GROUP

A At the heart of the decarbonization challenge : the earth subsurface

Our goal is to reveal the potential of renewable subsurface resources



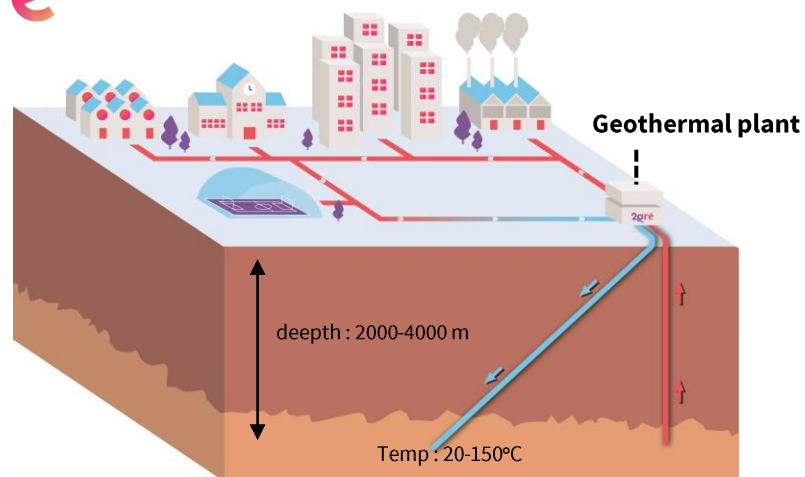
**Becoming a national champion
in the geothermal sector**

**Securing supplies of critical
metals, especially lithium**

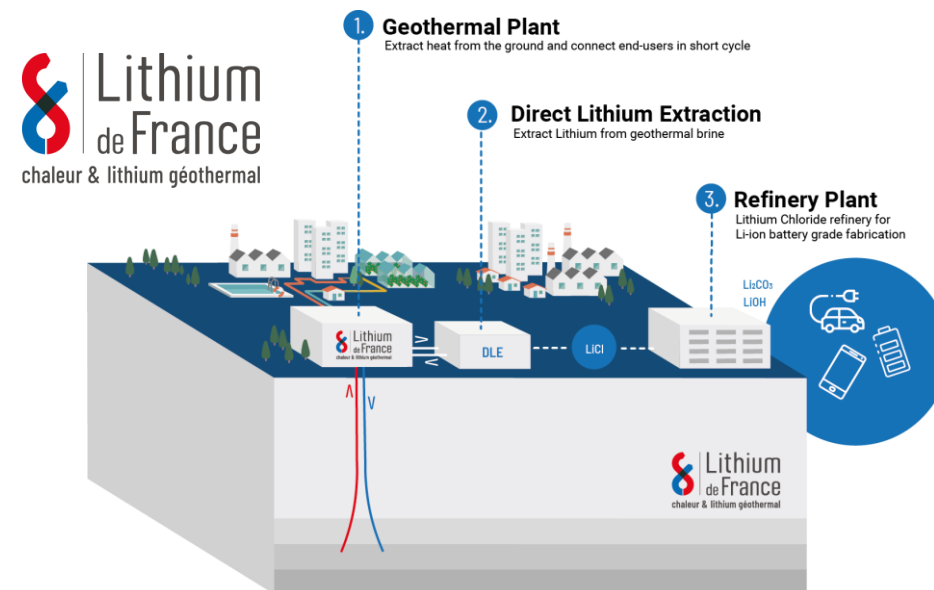
A An integrated player across the whole value chain of subsurface resources

The Group relies on subsidiaries with strong local roots and complementary expertise

2gré



Geothermal heat



Geothermal heat and lithium

DrillDeep arverne
DRILLING

DrillHeat



With a key industrial tool: drilling

Unique expertise for our external customers and for our own operations

A mission-driven company

We have chosen to make a commitment by becoming “mission-drive company”, in accordance with the Pacte law. This mission is part of Arverne’s raison d’être :

“Through its unique know-how, Arverne Group unleashes the potential of geo-resources and sustainably values them for a pragmatic energy transition dedicated to the prosperity of the local community”



With 2 objectives :

1. Acting as an ambitious energy player to champion a pragmatic energy transition

2. Encouraging a virtuous society by building on the strength of our staff and regions



10 CSR targets dedicated to climate, environment, well-being of the employees, and development of the local communities where the Group operates

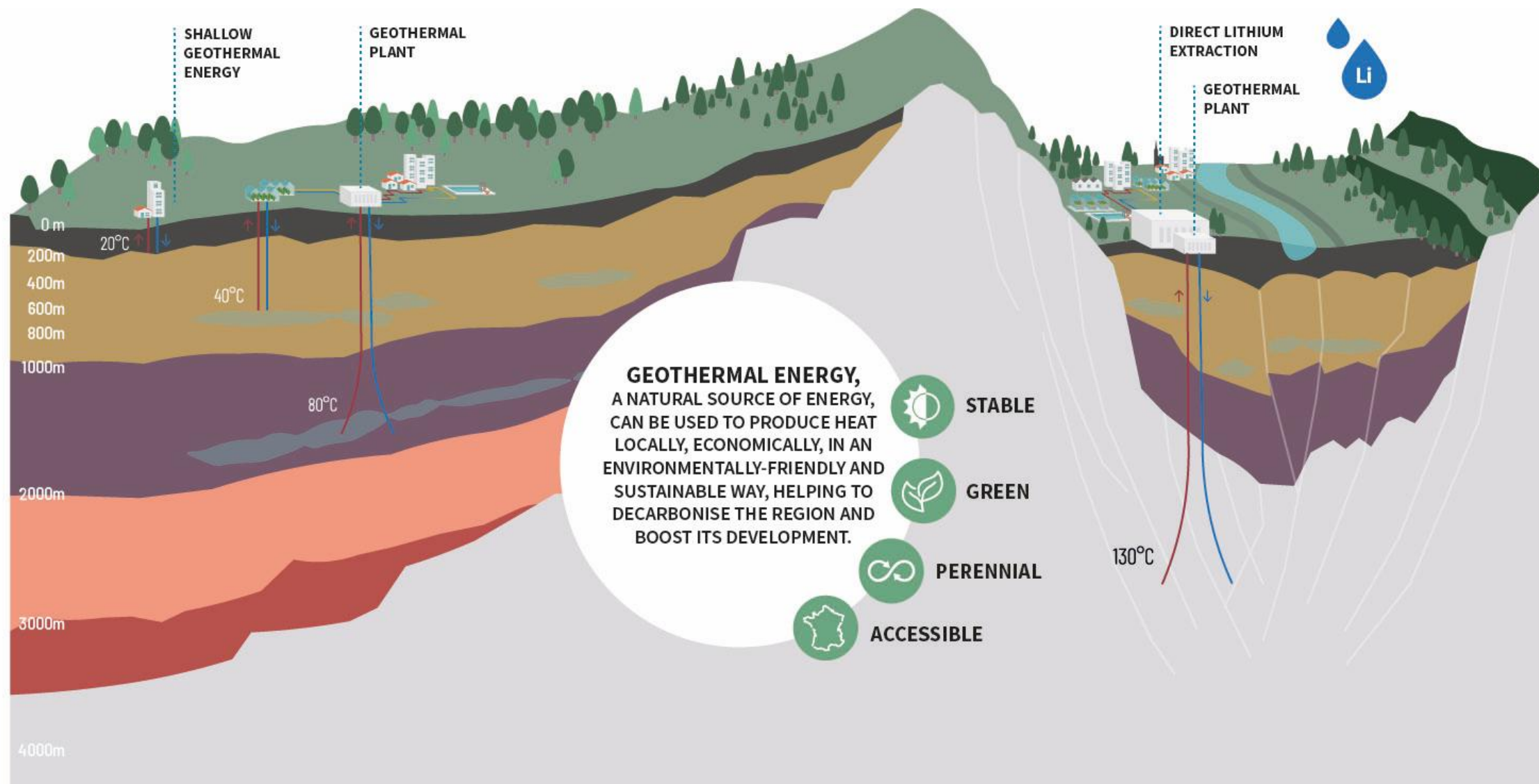


arverne
GROUP

GEO THERMAL ENERGY

Geothermal energy

Arverne Group is developing several types of geothermal energy



22gré : geothermal heat



14 employees
At the end of 2024



5 explorations
permits granted



1st geothermal
production in 2026

BUSINESS

- Production and sale of **geothermal heat to district heating networks and industrial customers** to support the energy transition

AMBITION

- Becoming a leader in geothermal energy over the next few years, with a production of 1,8 TWh/y by 2031



2024 MAIN ACHIEVEMENTS

- Structuring a **team of experts** : geologists, drilling engineering, surface engineering...
- **1st contract of geothermal heat** with Clichy-sous-Bois and Livry Gargan (capacity of production : 115 GWh)
- Construction of a **portfolio of projects** with 410 GWh in contracting
- **100km² 3D exploration campaign** on the « Riom Clermont Métropole » permit



arverne
GROUP

GEO THERMAL LITHIUM

Lithium de France : geothermal heat and lithium



43 employees
At the end of 2024



4 exploration
permits granted
2 permits in
instruction



1st lithium
production in 2028



Main co-shareholders



BUSINESS

• Production of geothermal heat and lithium

- Supplying renewable, non-intermittent, low-carbon heat to the local authorities
- Supplying battery-grade lithium, an essential metal for the energy transition, produced locally in a responsible and environmentally-friendly way

AMBITION

- Contributing to the decarbonization of the local economy, to the sovereignty of energy supply and critical materials, and to the green reindustrialization of the region.
- With a heat production of 2,2TWh/year and 27kT of lithium carbonate per year in 2031

2024 MAIN ACHIEVEMENTS

- Two 3D exploration campaigns, with **310km²** of subsurface imaging data acquired
- Construction of a **1st network of monitoring stations**
- Finalisation of a **pre-feasibility study** on geothermal lithium
- Selection of downstream process and final product



A low-angle, upward-looking photograph of a drilling rig. The image shows a series of thick, rusty metal drill pipes extending from the bottom towards the top of the frame. On the left, a heavy chain and various cables are visible. The rig's structure, including ladders and support beams, is also visible. The background is a clear blue sky with some light clouds. The image is split diagonally, with the right half being white.

arverne
GROUP

DRILLING

Deep drilling



116 employees
At the end of 2024



4 drilling rigs



5,000m
max drilling capacity

Partenaire



BUSINESS

- A strategic tool for Arverne available for the operations of its subsidiaries
- A modern, integrated deep drilling tool to secure the timetable for drilling operations



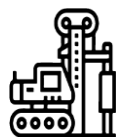
2024 MAIN ACHIEVEMENTS

- Creation of **DrillDeep**, a subsidiary cofounded with **Herrenknecht AG**
- Work-over contact with **Storengy** (6 wells delivered in 2024, **18 wells delivered since 2022**)
- **Drilling of a geothermal doublet** for **ADP** at Roissy-CDG airport
- Finalisation of the co-design with Herrenknecht AG of a new **deep drilling rig**, delivery December 2024

Shallow drilling



18 employees
At the end of 2024



6 drilling
machines



300m
max drilling capacity

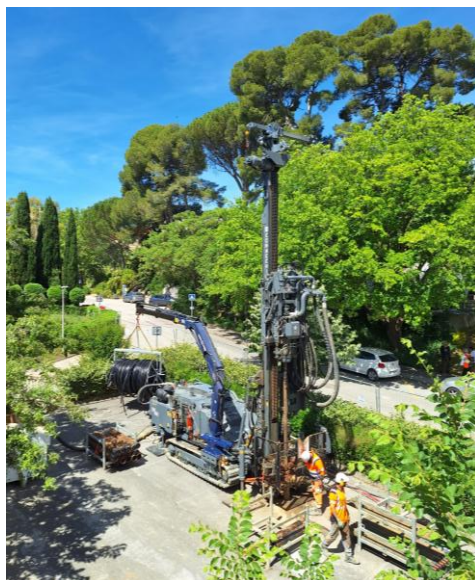
Partners

eren accenta.
GROUPE

DrillHeat

BUSINESS

- DrillHeat is meeting strong demand from a wide range of customers and preparing Arverne Group to expand its range of renewable heating and cooling solutions



2024 MAIN ACHIEVEMENTS

- Acquisition of **3 drilling machines**
- In 2024 : **42 projects** for local authorities and businesses
- Since its creation : **more than 489 geothermal probes installed**, corresponding to 79 846 meters
- **Open days** at several sites to showcase geothermal energy operations



M Management Team



Pierre Brossollet
Founder & CEO of
Arverne Group



Thierry Trouyet
Deputy CEO of
Arverne Group



Frédérique Barthélemy
Impact & Engagement
Director of Arverne Group



Damien Bévillon
Technical Director of
Arverne Group



Marianne Daryabegui
Head of financing,
Capital Markets and M&A



Frédérique Dosseur
Legal Director of
Arverne Group



Loïc Haslin
CEO of Arverne
Drilling Services



Frédéric Houssay
Marketing Director
Of Arverne Group



Christophe Labes
New Business Director
Nouvelle Aquitaine area



Patrice Landolt
CEO of DrillHeat



Emeline Othax
CFO of
Arverne Group



Guillaume Saincaize
Human resources Director
of Arverne Group



Guillaume Tarnaud
Planning and Risk
Management of Arverne
Group and CEO of
Lithium de France



Gregory Van den Perre
CEO of 2gré

B Board members



1. **Pierre Brossollet** Chairman of the Board, Chairman of the Strategy, Risks and CSR Committee
2. **Tiphaine Auzière** Lead independent director, member of Nominations and Remuneration committee
3. **Xavier Caïtucoli** Director, member of the Strategy, Risks and CSR Committee
4. **Karine Charbonnier** Independant Director, member of the Audit committee
5. **Bruno Gérard** Independant Director, member of the Strategy, Risks and CSR Committee
6. **Jérôme Gouet** Permanent representative of Renault SA, director, member of the Strategy, Risks and CSR Committee
7. **Manoelle Lepoutre-Saint-M'leux** Permanent representative of Arosco, director
8. **Colette Lewiner** Representative of Cowin, independant Director, Chairwoman of Nominations and Remuneration committee
9. **Françoise Malrieu** Independant Director, Chairwoman of Audit committee
10. **Karine Mère** Representative of Ademe Investissement, director, member of the Audit committee
11. **Fabrice Dumonteil** Censor

Our ecosystem

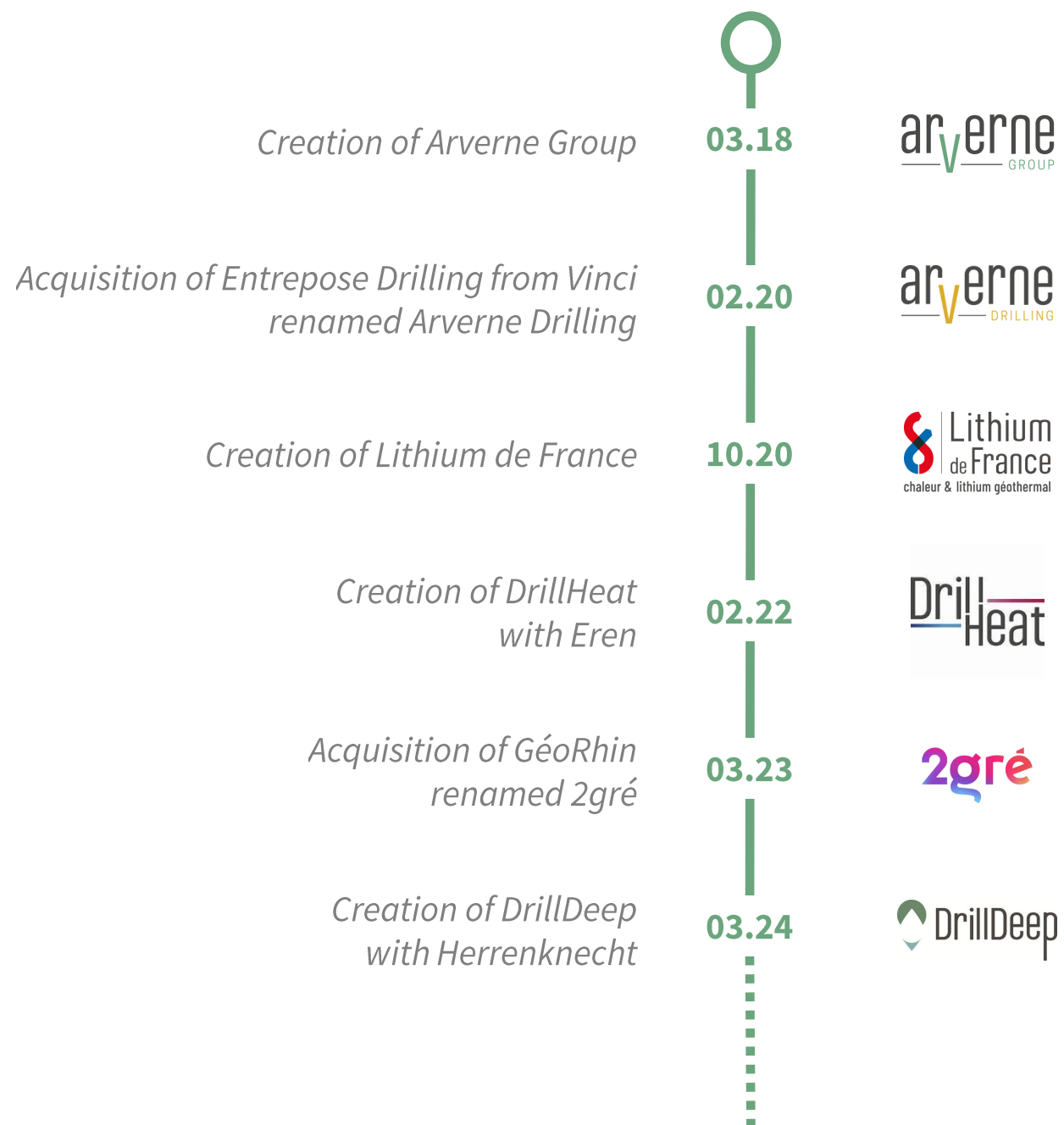
We have established **structuring partnerships** with global key players and are supported by **strategic investors**.

MAIN SHAREHOLDERS



PROFESSIONAL ASSOCIATIONS





Our story

Arverne Group has already achieved many milestones ...

Outlook

...and has set ambitious targets

2026



1st heat production

2028



1st lithium production

Consolidated revenue: €180 – 220m

Current EBITDA margin ~ 40% (*)

2031



1,8 TWh : annual heat production



27kt : annual lithium carbonate production

2,2TWh : annual heat production

Consolidated revenue: €900 - 1 000m

Current EBITDA margin ~70%

Growth trajectory may be adjusted depending on the results of the final feasibility study

** 2028 Ebitda target includes a dominant 'intra-group' contribution of €15m from drilling activities in an adjusted timetable following the finalisation of the PFS*

1.

A market driven by decarbonization and energy sovereignty issues

2.

An experienced **management team**, **key shareholders** and a **board of directors** with complementary profiles

3.

Strategic partnerships with international key players

4.

An **integrated business model** with a presence over the whole value chain, from sub-surface analysis to drilling and sales of the resources

5.

A large portfolio of **Exclusive Exploration Permits** and **3D subsurface data**



A mission-driven company since 2022

www.arverne.earth | communication@arverne.earth
2 avenue du Président Pierre Angot 64000 PAU